

005532

RECEIVED
LARAMIE COUNTY
CHEYENNE, WY.

CERTIFIED LAND CORNER RECORDATION

'86 FEB 21 PM 3 42

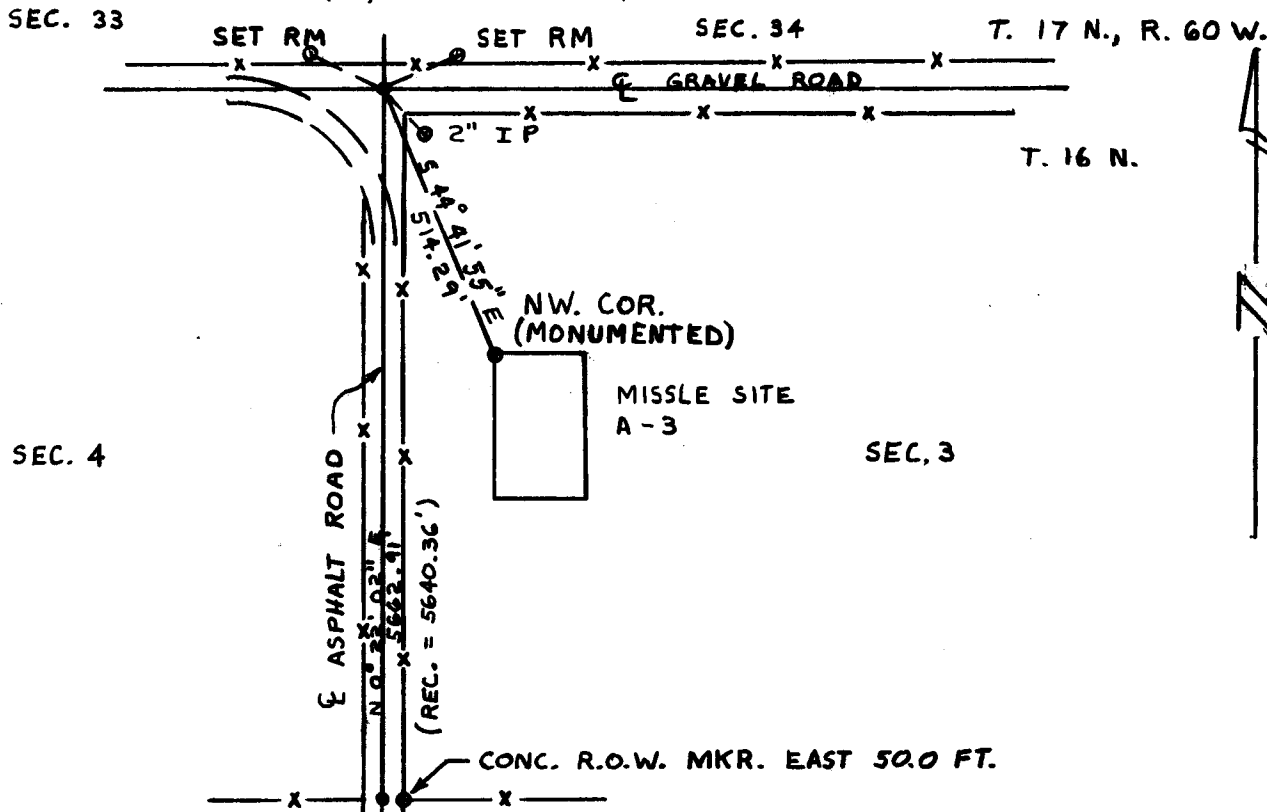
DESCRIPTION OF CORNER EVIDENCE FOUND, AND ORIGINAL RECORD (If known)

At the corner of sections 3, 4, 33, and 34, Ts.16 and 17N., R.60W., 6th P.M., Laramie County, Wyoming, found a large bolt head shaft 4" below surface of gravel road, centered on E.-W. fenced R.O.W. and gravel road and centerline of asphalt road and fenced R.O.W. to South.

DESCRIPTION OF MONUMENT AND ACCESSORIES ESTABLISHED TO PERPETUATE THE ORIGINAL LOCATION OF THIS CORNER:

From the corner; Set a No. 5 rebar N.53°11'32"E., 59.17 feet for a reference monument, alum cap marked 59.17 feet and an arrow pointing to the corner.
Set a No. 5 rebar N.53°32'40"W., 62.63 feet, for a reference monument, alum cap marked 62.63 feet and an arrow pointing to the corner.
A 2" iron pipe bears S.51°47'52"E., 62.80 feet distant.

SKETCH, WITH COURSE AND DISTANCE TO ADJACENT CORNER IF DETERMINED IN THIS SURVEY. (May Sketch or Paste Reproduction on Reverse Side.)



Bearings determined by Solar Observation

I, Jeffrey D. Youngquist certify that I have carefully performed or reviewed the work done on the diagrammed corner as reported on this recordation form and approve the same.

Jeffrey D. Youngquist R.L.S. 3515
Signature of Surveyor Registration No.

STATE OF WYOMING,
Office of Clerk and Recorder,
Laramie
County of _____

This "corner record" was filed for record on the 21 day of Feb, 1986, was noted on the cross-index plat and is assigned page No. _____, in book No. _____

Frank C. Whitehead
County Official

Cross Index No. _____	T. _____	R. _____	Mer. _____
_____	T. _____	R. _____	Mer. _____
_____	T. _____	R. _____	Mer. _____
_____	T. _____	R. _____	Mer. _____
_____	T. _____	R. _____	Mer. _____
_____	T. _____	R. _____	Mer. _____
_____	T. _____	R. _____	Mer. _____